

MONTHLY MEMBERSHIP PROGRESS REPORT

LOCATION INDIA

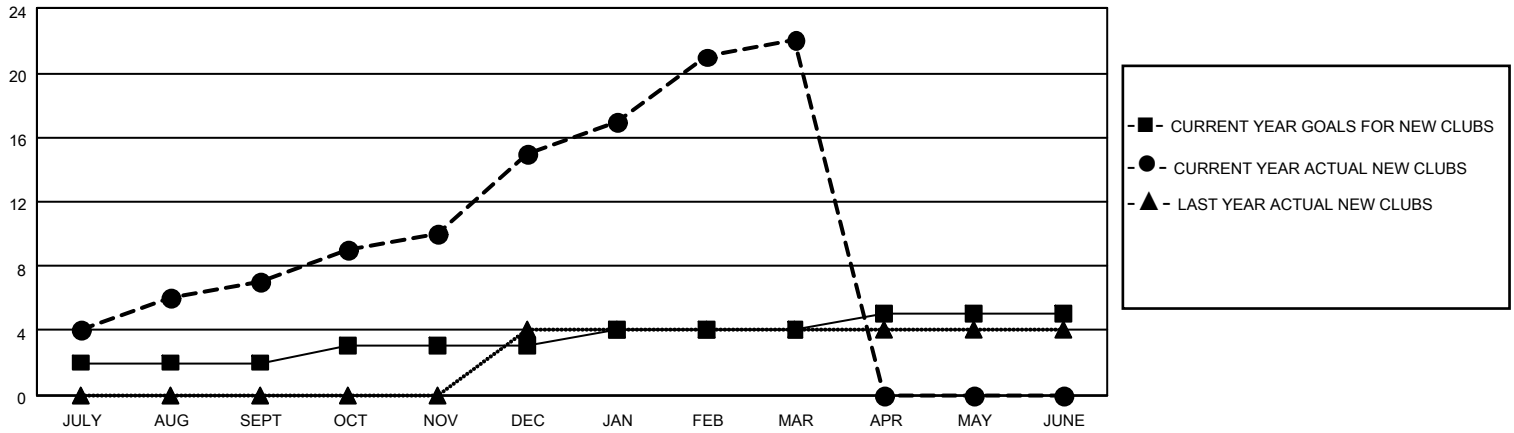
District 3232 J

Results as of: 3/31/2022

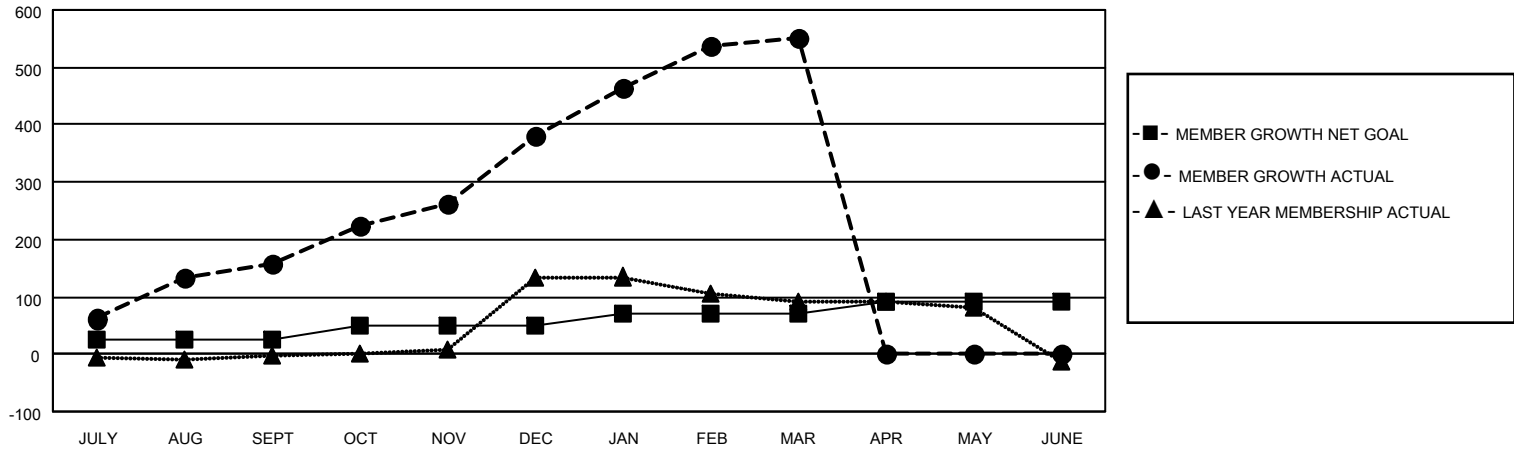
Clubs			
RESULTS FOR 2021-2022			
QUARTER	NEW CLUB GOAL	NEW CLUBS	DROPPED CLUBS
JULY/AUG/SEPT	2	7	0
OCT/NOV/DEC	1	8	0
JAN/FEB/MAR	1	7	0
APR/MAY/JUNE	1	0	0

Members			
RESULTS FOR 2021-2022			
QUARTER	MEMBER GROWTH NET GOAL	MEMBER GROWTH ACTUAL	DROPPED MEMBERS ACTUAL (including transfers)
JULY/AUG/SEPT	25	243	74
OCT/NOV/DEC	25	262	37
JAN/FEB/MAR	20	229	58
APR/MAY/JUNE	20	0	0

GOALS AND ACTUAL NEW CLUBS CUMULATIVE



GOALS AND ACTUAL MEMBERS CUMULATIVE



DROPPED CLUBS: 0

53 CLUBS OF 81 ADDED 1 OR MORE NEW MEMBERS

GENDER DISTRIBUTION

MALE	2,133 (71.46%)
FEMALE	852 (28.54%)
NON BINARY	0 (0.00%)
PREFER NOT TO ANSWER	0 (0.00%)

DROPPED MEMBERS

[CLICK HERE FOR CUMULATIVE MEMBERSHIP DATA](#)

DECEASED	4
CLUB CANCELLED	0
OTHER	165
TOTAL	169

TOTAL FAMILY UNIT MEMBERS 2,157

FAMILY MEMBERS PAYING HALF DUES 1,487